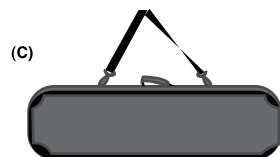
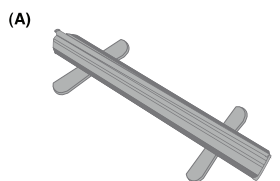


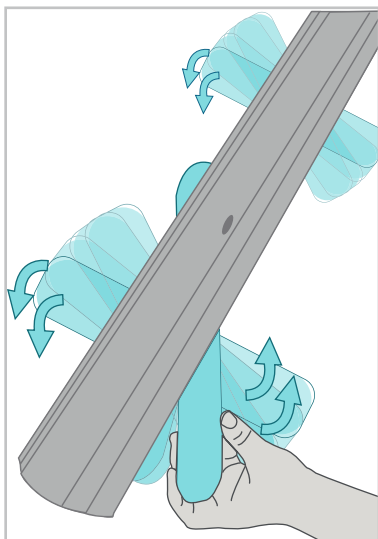
# ECONOMY RETRACTABLE - Assembly Instructions

## CONTENTS SUPPLIED

- (A) HARDWARE STAND
- (B) TELESCOPIC SUPPORT POLE
- (C) SILVER TRAVEL BAG

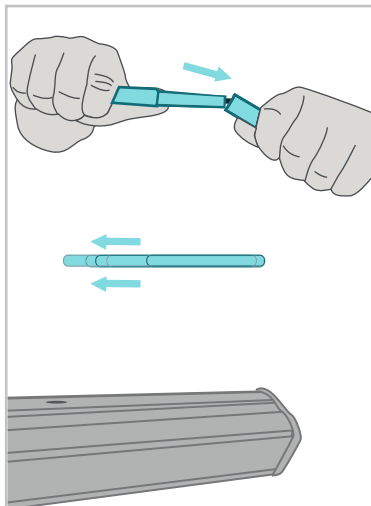


## STEP 1



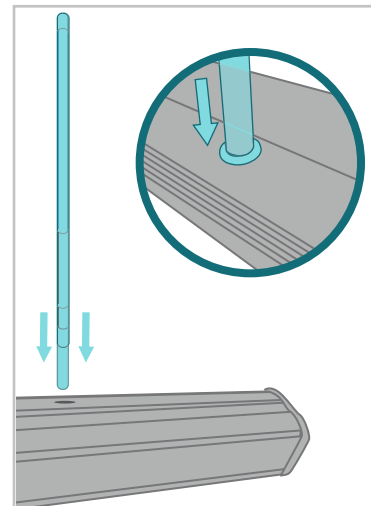
Rotate the stabilizing feet 90° and remove the pole from the banner stand

## STEP 2



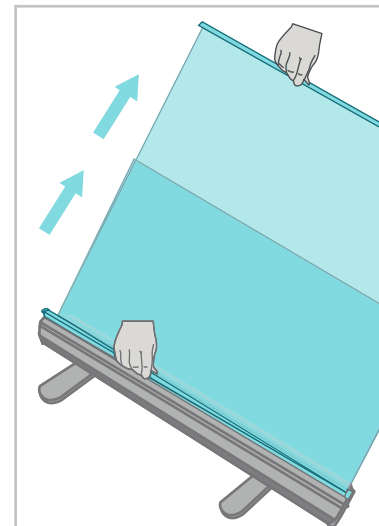
Connect the pole sections together. (The hooked end corresponds to the top and the round end corresponds to the bottom base.)

## STEP 3



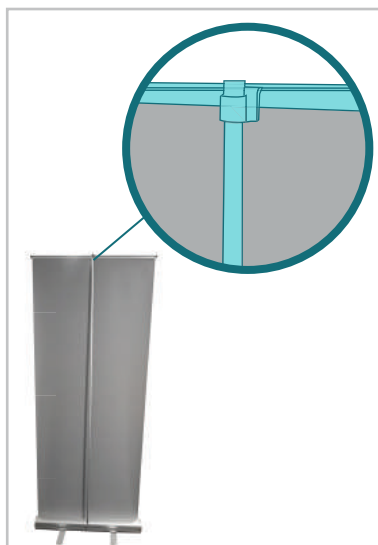
Insert pole into the hole on the base

## STEP 4



Unroll the banner out of the base by tilting the unit backwards (This makes unraveling the graphics easier.)

## STEP 5



Attach telescopic pole to the clamp bar. Adjust pole to desired height.

## ADDITIONAL PRODUCTS AVAILABLE

